

# R50IR150H. Series-G4.1

tower obstacle light for nighttime marking



## Steel Tower Obstacle Light R50IR150H.D17-G4.1

### For nighttime marking according to:

- LIOL A according to ICAO
- LIOL B according to ICAO
- LIOL E according to ICAO
- L-810 according to FAA
- Lage Intensiteit for Netherlands
- IR LIOL according to Trafi
- IR Niederleistung according to BAZL

The Lanthan obstacle light is characterized by its compact design and robust construction. Its key features include:

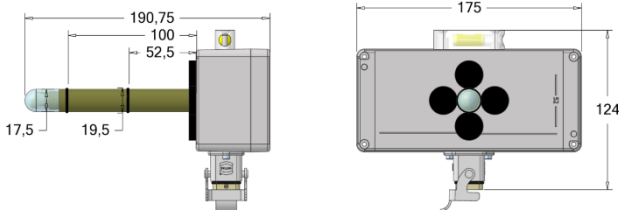
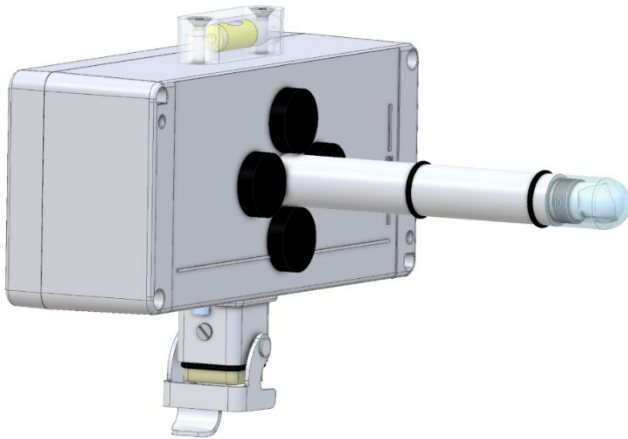
- Applicable for steel towers
- Cabinet housing
- Magnet mounted

Being the first LED fire supplier in the wind industry, Lanthan provides reliable obstacle lights.

Manufactured by TWE GmbH Trade Wind Energy (part of Lanthan Group).

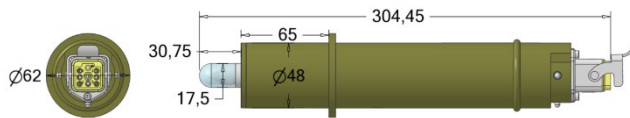
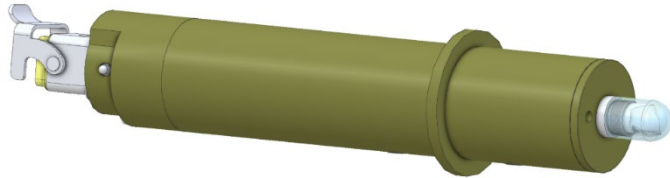
### Article Allocation

Name / Description	Article-No.
R50IR150H.D17-G4.1	LAN-000818



# R50IR150H. Series-G4.1

tower obstacle light for nighttime marking



## Concrete Tower Obstacle Light R50IR150H.D50-G4.1

### For nighttime marking according to:

- LIOL A according to ICAO
- LIOL B according to ICAO
- LIOL E according to ICAO
- L-810 according to FAA
- Lage Intensiteit for Netherlands
- IR LIOL according to Trafi
- IR Niederleistung according to BAZL

The Lanthan obstacle light is characterized by its compact design and robust construction. Its key features include:

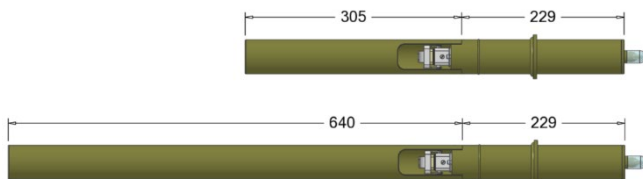
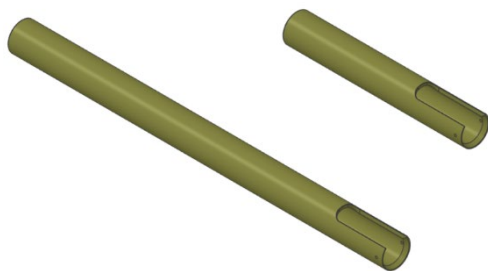
- Applicable for concrete towers
- Tube housing
- Adapter kid adjustable length up to 305mm or 640mm

Being the first LED fire supplier in the wind industry, Lanthan provides reliable obstacle lights.

Manufactured by TWE GmbH Trade Wind Energy (part of Lanthan Group).

### Article Allocation

Name / Description	Article-No.
R50IR150H.D50-G4.1	LAN-000820



### Adapter-kid

# R50IR150H. Series-G4.1

tower obstacle light for nighttime marking



## Concrete Tower Obstacle Light R50IR150H.D50L119-G4.1

### For nighttime marking according to:

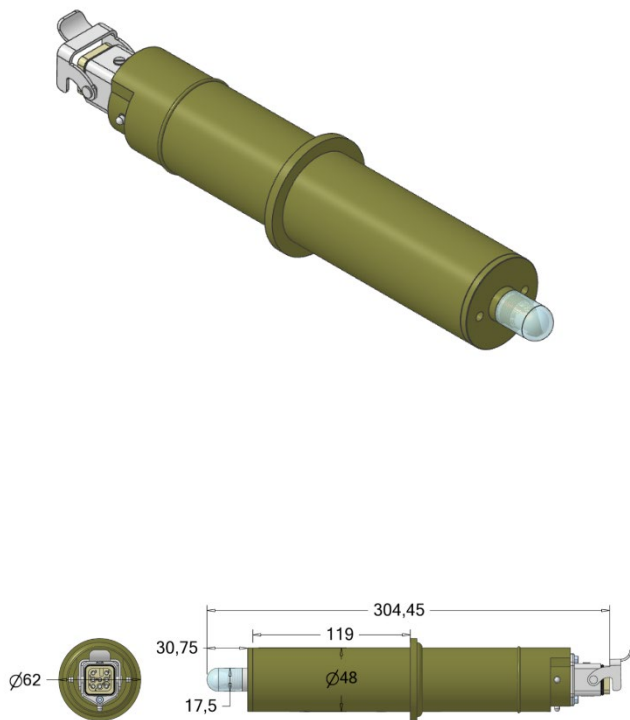
- LIOL A according to ICAO
- LIOL B according to ICAO
- LIOL E according to ICAO
- L-810 according to FAA
- Lage Intensiteit for Netherlands
- IR LIOL according to Trafi
- IR Niederleistung according to BAZL

The Lanthan obstacle light is characterized by its compact design and robust construction. Its key features include:

- Applicable for concrete towers
- Tube housing
- Adapter kid adjustable length up to 305mm or 640mm

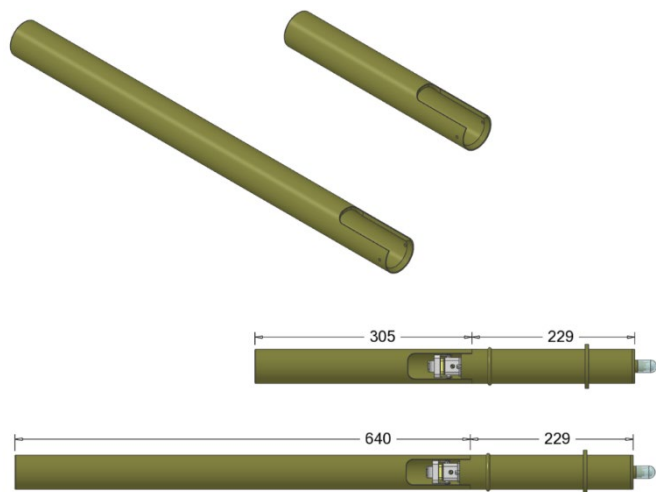
Being the first LED fire supplier in the wind industry, Lanthan provides reliable obstacle lights.

Manufactured by TWE GmbH Trade Wind Energy  
(part of Lanthan Group).



### Article Allocation

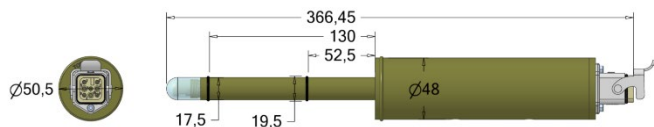
Name / Description	Article-No.
R50IR150H.D50L119-G4.1	LAN-012958



### Adapter-kid

# R50IR150H. Series-G4.1

tower obstacle light for nighttime marking



## Steel Tower Obstacle Light R50IR150H.SL-D17L130-G4.1

### For nighttime marking according to:

- LIOL A according to ICAO
- LIOL B according to ICAO
- LIOL E according to ICAO
- L-810 according to FAA
- Lage Intensiteit for Netherlands
- IR LIOL according to Trafi
- IR Niederleistung according to BAZL

The Lanthan obstacle light is characterized by its compact design and robust construction. Its key features include:

- Applicable for steel towers
- tube housing
- clamp mounted

Being the first LED fire supplier in the wind industry, Lanthan provides reliable obstacle lights.

Manufactured by TWE GmbH Trade Wind Energy (part of Lanthan Group).

### Article Allocation

Name / Description	Article-No.
R50IR150H.SL-D17L130-G4.1	LAN-000822

# R50IR150H. Series-G4.1

tower obstacle light for nighttime marking



## Steel Tower Obstacle Light R50IR150H.SL-D17L100-G4.1

### For nighttime marking according to:

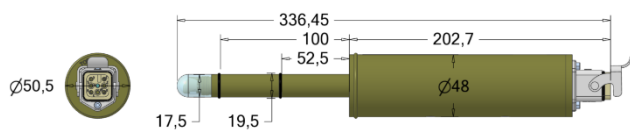
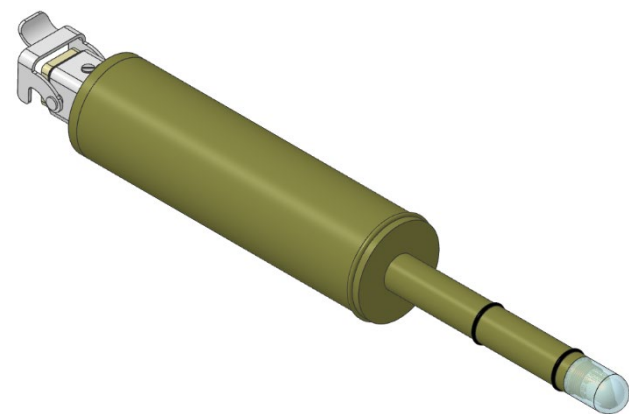
- LIOL A according to ICAO
- LIOL B according to ICAO
- LIOL E according to ICAO
- L-810 according to FAA
- Lage Intensiteit for Netherlands
- IR LIOL according to Trafi
- IR Niederleistung according to BAZL

The Lanthan obstacle light is characterized by its compact design and robust construction. Its key features include:

- Applicable for steel towers
- tube housing
- clamp mounted

Being the first LED fire supplier in the wind industry, Lanthan provides reliable obstacle lights.

Manufactured by TWE GmbH Trade Wind Energy (part of Lanthan Group).



### Article Allocation

Name / Description	Article-No.
R50IR150H.SL-D17L100-G4.1	LAN-013970

# R50IR150H. Series-G4.1

tower obstacle light for nighttime marking



## Technical Data for R32H. Series-G4.1

Nominal Voltage	24 V / 48 V
Functional Voltage	18,2 V DC up to 52 V DC
Ambient temperature	-40° to +55 °C
Power consumption	Average (10 cd): approx. 2 W Average (10 cd + 150 mW/sr): approx. 7 W Average (32 cd): approx. 5 W Average (32,5 cd + 4 mW/sr): approx. 6 W Average (50 cd + 25 mW/sr): approx. 11 W
Max on current	0,6 A
Service lifetime	Min. 10 years
Optical characteristics red	<ul style="list-style-type: none"><li>• 10 cd <i>LIOL A</i> (ICAO)</li><li>• 10 cd <i>Niederleistungsfeuer</i> (BAZL)</li><li>• 32 cd <i>LIOL B</i> (ICAO)</li><li>• 32 cd <i>LIOL E</i> (ICAO)</li><li>• 32,5 cd <i>L-810</i> (FAA)</li><li>• 50 cd <i>Lage Intensiteit</i> (NL)</li></ul>
Optical characteristics infrared	<ul style="list-style-type: none"><li>• 4 mW/sr <i>L-810</i> (FAA)</li><li>• 25 mW/sr <i>IR LIOL</i> (Trafik)</li><li>• 150 mW/sr <i>IR Niederleistung</i> (BAZL)</li></ul>
Colour coordinates / wavelength	according to ICAO; peak wavelength infrared: 850nm
Enclosure	Marine grade aluminum (AlMg3) EN AW-5754, anodized to 25 µm
Lens	Clear acrylic, UV-resistant
Bare weight	< 1,5 kg
IP-class	Cabinet housing IP54 Tube housing IP65

## Pin Out

1	Power Supply (+24/48 V)
2	RS485 D1
3	RS485 D0
4	enable
5	feedback
6	0V
7	n.a.
8	PE



## Additional Information:

- System Integration Manual