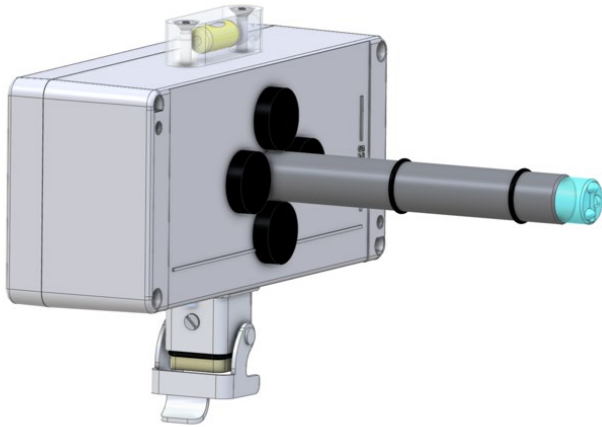


# R32H. Series-G4.1

tower obstacle light for nighttime marking



## Steel Tower Obstacle Light R32H.D17-G4.1

### For nighttime marking according to:

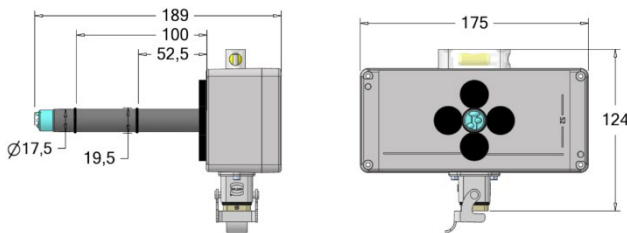
- LIOL A according to ICAO
- Hindernisfeuer ES according to AVV
- LIOL B according to ICAO
- LIOL Type E according to ICAO

The Lanthan obstacle light is characterized by its compact design and robust construction. Its key features include:

- Applicable for steel towers
- Cabinet housing
- Magnet mounted

Being the first LED fire supplier in the wind industry, Lanthan provides reliable obstacle lights.

Manufactured by TWE GmbH Trade Wind Energy (part of Lanthan Group).

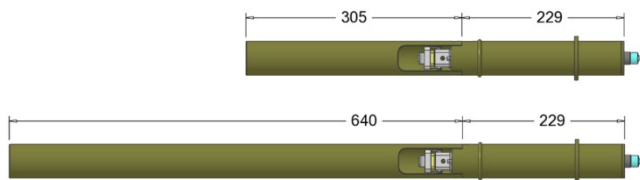
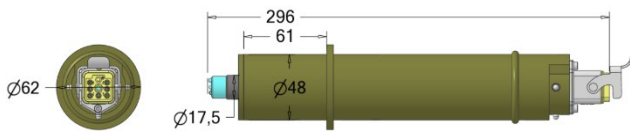
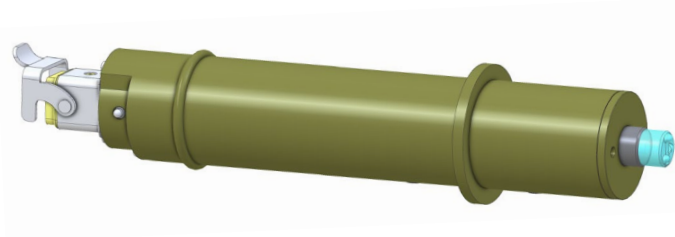


### Article Allocation

| Name / Description | Article-No. |
|--------------------|-------------|
| R32H.D17-G4.1      | LAN-000813  |

# R32H. Series-G4.1

tower obstacle light for nighttime marking



## Concrete Tower Obstacle Light R32H.D50-G4.1

### For nighttime marking according to:

- LIOL A according to ICAO
- Hindernisfeuer ES according to AVV
- LIOL B according to ICAO
- LIOL Type E according to ICAO

The Lanthan obstacle light is characterized by its compact design and robust construction. Its key features include:

- Applicable for concrete towers
- Tube housing
- Adapter kid adjustable length up to 305mm or 640mm

Being the first LED fire supplier in the wind industry, Lanthan provides reliable obstacle lights.

Manufactured by TWE GmbH Trade Wind Energy (part of Lanthan Group).

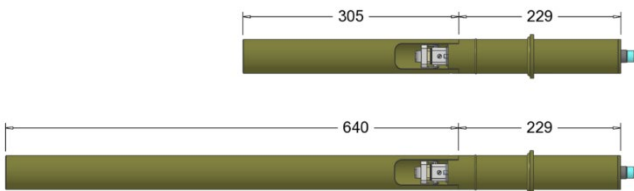
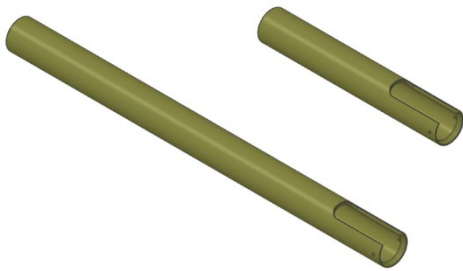
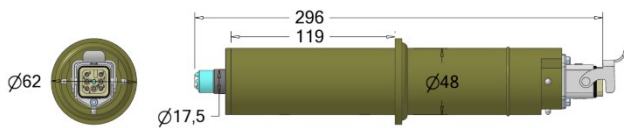
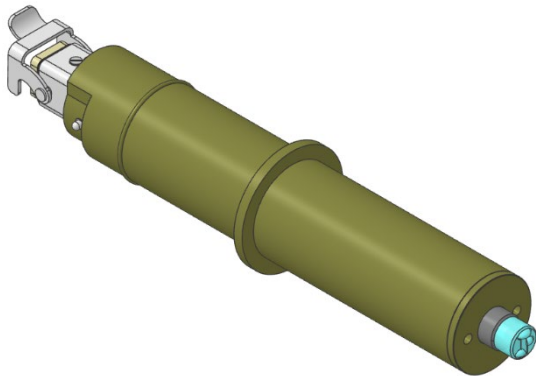
### Article Allocation

| Name / Description | Article-No. |
|--------------------|-------------|
| R32H.D50-G4.1      | LAN-000815  |

### Adapter-kid

# R32H. Series-G4.1

tower obstacle light for nighttime marking



## Steel Tower Obstacle Light R32H.D50L119-G4.1

### For nighttime marking according to:

- LIOL A according to ICAO
- Hindernisfeuer ES according to AVV
- LIOL B according to ICAO
- LIOL Type E according to ICAO

The Lanthan obstacle light is characterized by its compact design and robust construction. Its key features include:

- Applicable for concrete towers
- Tube housing
- Adapter kid adjustable length up to 305mm or 640mm

Being the first LED fire supplier in the wind industry, Lanthan provides reliable obstacle lights.

Manufactured by TWE GmbH Trade Wind Energy (part of Lanthan Group).

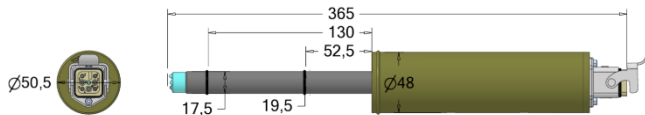
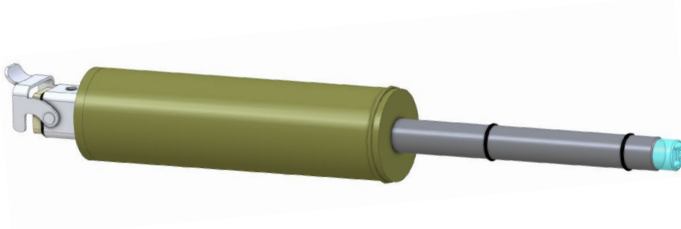
### Article Allocation

| Name / Description | Article-No. |
|--------------------|-------------|
| R32H.D50L119-G4.1  | LAN-012959  |

### Adapter-kid

# R32H. Series-G4.1

tower obstacle light for nighttime marking



## Steel Tower Obstacle Light R32H.SL-D17L130-G4.1

### For nighttime marking according to:

- LIOL A according to ICAO
- Hindernisfeuer ES according to AVV
- LIOL B according to ICAO
- LIOL Type E according to ICAO

The Lanthan obstacle light is characterized by its compact design and robust construction. Its key features include:

- Applicable for steel towers
- tube housing
- clamp mounted

Being the first LED fire supplier in the wind industry, Lanthan provides reliable obstacle lights.

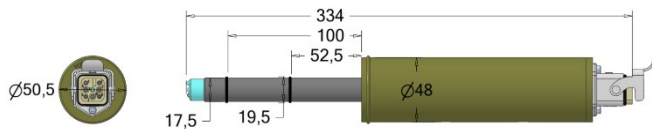
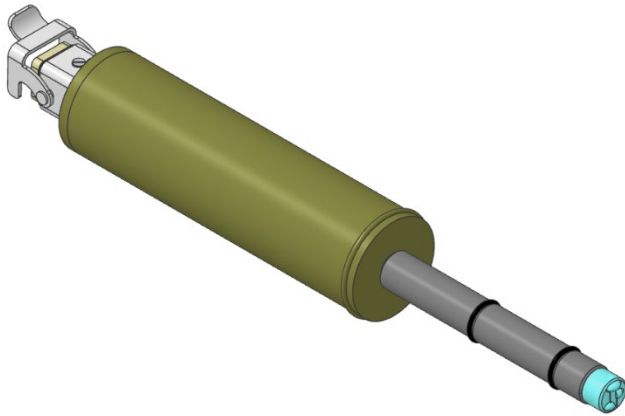
Manufactured by TWE GmbH Trade Wind Energy (part of Lanthan Group).

### Article Allocation

| Name / Description   | Article-No. |
|----------------------|-------------|
| R32H.SL-D17L130-G4.1 | LAN-000817  |

# R32H. Series-G4.1

tower obstacle light for nighttime marking



## Steel Tower Obstacle Light R32H.SL-D17L100-G4.1

### For nighttime marking according to:

- LIOL A according to ICAO
- Hindernisfeuer ES according to AVV
- LIOL B according to ICAO
- LIOL Type E according to ICAO

The Lanthan obstacle light is characterized by its compact design and robust construction. Its key features include:

- Applicable for steel towers
- tube housing
- clamp mounted

Being the first LED fire supplier in the wind industry, Lanthan provides reliable obstacle lights.

Manufactured by TWE GmbH Trade Wind Energy (part of Lanthan Group).

### Article Allocation

| Name / Description   | Article-No. |
|----------------------|-------------|
| R32H.SL-D17L100-G4.1 | LAN-013969  |

# R32H. Series-G4.1

tower obstacle light for nighttime marking



## Technical Data for R32H. Series-G4.1

|                                  |   |
|----------------------------------|---|
| Nominal Voltage                  | 24 V / 48 V DC  |
| Functional Voltage               | 18,2 V up to 52 V DC  |
| Ambient temperature              | -40° to +55 °C  |
| Power consumption                | 10 cd: < 1 W<br>32 cd: 2,5 W  |
| Max on current                   | 0,6 A   |
| Service lifetime                 | Min. 10 years   |
| Optical characteristics infrared | <ul style="list-style-type: none"><li>• 10 cd LIOL A (ICAO)</li><li>• 10 cd Hindernisfeuer ES (AVV)</li><li>• 32 cd LIOL B (ICAO)</li><li>• 32 cd LIOL E (ICAO)</li></ul> |
| Colour coordinates               | According to ICAO   |
| Enclosure                        | Marine grade aluminum (AlMg3) EN AW-5754, anodized to 25 µm   |
| Lens                             | Clear acrylic, UV-resistant   |
| Bare weight                      | < 1,5 kg  |
| IP-class                         | Cabinet housing IP54<br>Tube housing IP65   |

## Pin Out

|   |                            |
|---|----------------------------|
| 1 | Power Supply<br>(+24/48 V) |
| 2 | RS485 D1                   |
| 3 | RS485 D0                   |
| 4 | enable                     |
| 5 | feedback                   |
| 6 | 0 V                        |
| 7 | n.a.                       |
| 8 | FE                         |



## Additional Information:

- System Integration Manual